

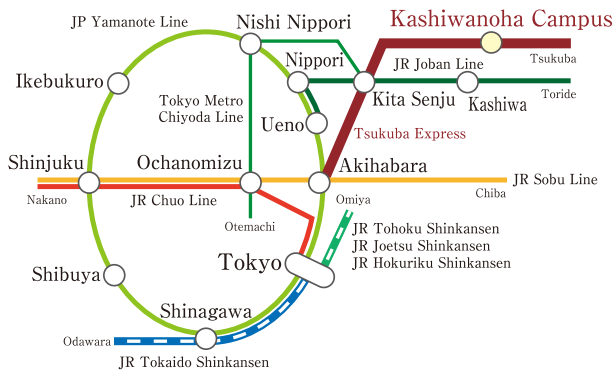
# Enjoy a calm and peaceful stay in a place facing the lush green Kashiwanoha Park.

A new Mitsui Garden Hotel has opened beside the National Cancer Center Hospital East with facilities to aid in the treatment of cancer.



exterior

## ACCESS



### Using a bus from Tokyo Station

- To the west exit of Kashiwanoha Campus Station takes 1 hour 10 minutes via high-speed bus from JR Tokyo (Tobu Bus-Keisei Bus-JR Bus Joint Operation)

### When using a train

- Use the Tsukuba Express from JR Akihabara Station. From Akihabara Station, Kashiwanoha Campus Station is about 30 minutes away.
- Express line, it takes approximately 3 minutes from the first boarding platform of the Tobu Bus shuttle bus to boarding the West Kashiwa 03:04-10 bus. From there, it is a 1-minute walk to the "Mitsui Garden Hotel, Kashiwanoha Park Side (Customs Training Institute)" bus stop.

### When using a car

- 4 minutes from the Joban Expressway (Kashiwa IC)

### When using the airport

- From the Haneda Airport the Tobu/ Keihin Express Bus Co. Ltd. bound for Kashiwanoha Station, west exit, takes approximately 1 hour 15 mins.

## LOCATION

A vast Kashiwanoha Park stretches in front of the hotel where one can enjoy the cherry blossoms during the spring season. Further, in the vicinity of Kashiwanoha Campus Station is a concentration of large commercial facilities including Lalaport, Kashiwanoha, Kashiwanoha T-SITE, KOIL LINK GARAGE, and more, which offer enjoyable shopping or gourmet experiences.



Kashiwanoha Park



Lalaport, Kashiwanoha



Kashiwanoha T-SITE



Mitsui Garden Hotel Kashiwanoha Park Side  
三井ガーデンホテル 柏の葉パークサイド

6-5-2, Kashiwanoha, Kashiwa City,  
Chiba 277-0882 Japan  
TEL: 04-7137-6131 FAX: 04-7137-6132

To the reservation site  
from here ▶

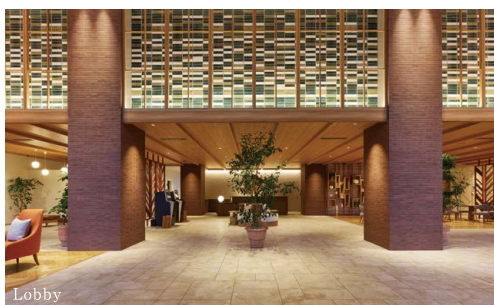




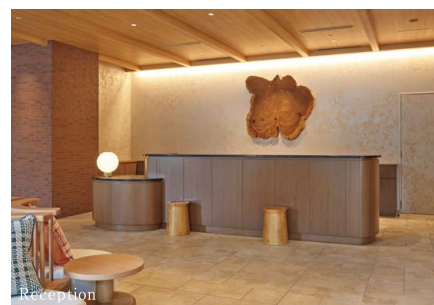
Lobby

A place to experience luxurious beauty surrounded by light and greenery.

Regardless of the season, discover a pleasant conservatory with tranquil sunlight and greenery. An open-air entrance hall and lobby coupled with an atrium accord a warm welcome to visitors.



Lobby



Reception

RESTAURANT

**丁字屋** French Restaurant and Café  
**KASHIWA-NO-HA** 「Chojiya KASHIWA-NO-HA」

Business Hours Breakfast 6:30-10:00 Lunch 11:30-15:00 Dinner 17:30-21:00

A French restaurant and café that brings “creative French cuisine enjoyed using chopsticks”. Terrace seats surrounded by greenery have been provided. A buffet based on the concept of “eco-friendly breakfast” and “mind- and body-energizing breakfast” are made using locally sourced seasonal vegetables.



Restaurant



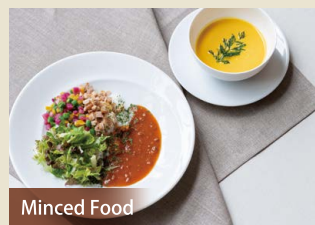
Home baked breads sold every morning

**CHOJIYA**  
 Boulangerie

「Chojiya Boulangerie」



A minced diet can be arranged to meet the guest's physical condition. Please enquire at the restaurant.



Minced Food

LOUNGE

24-hour guest-use lounge. Can be used for guests who arrive before check-in and after check-out times. Resident care staff are available for emergency care. Further, an IT concierge support counter can assist with the use of IT devices like wearable devices, etc.



Lounge



Beverage Corner

Beverage Corner

Presenting decaffeinated coffee as well as tea and water. Microwave ovens are also available.

Counter Desk

Suitable for dining or remote work while enjoying the park. Charging outlets are also available.

Library Corner

A space to leisurely read newspapers or books is available. A collection of about 30 kinds of magazines about travel, cooking, and lifestyle topics are available.

Amenities Corner

For the convenience of those spending consecutive nights, each room is provided with extra amenities like towels, toothbrushes, cotton, etc.

CONVENIENCE STORE

A 7-Eleven operates on the first floor where drinks, foods, and daily-use articles are sold. Opening hours are from 7:00 to 22:00.



Image photo

GUEST ROOM

Promising a comfortable hotel stay for short stays as well as long stays.

A total of 145 rooms that can be selected and adapted for the stay of cancer patients.

All the rooms also have access to the hospital, there are rooms equipped with a kitchen, washing machine, and ostomate-friendly toilet. Call buttons allow guests to call the care staff at times of sudden emergencies.

Supporting an environment for a fulfilled and comfortable stay. It can be used effectively for business purposes as well.



Monitors can be borrowed.



Tables large enough for a monitor and PC are provided.



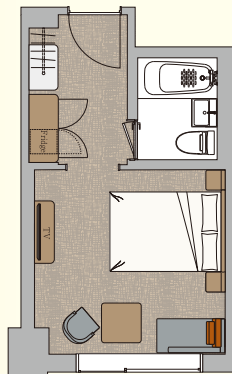
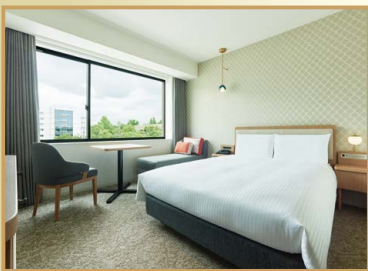
Wi-Fi environment is provided.

Room Type

**Moderate Double**

22.8㎡

Guest rooms with unit-type bathrooms. 700x700mm tables are provided at the windows, allowing space to have food or work on a laptop.

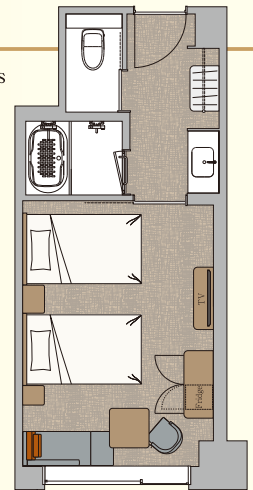


Room Type

**Superior Twin**

30.0㎡

Guest rooms with independent bathrooms (bathroom/ toilets/ wash basin). Sofas where you can relax with legs outstretched and a 700x700mm table are provided.



Rooms with an ostomate-friendly toilet are also available.

Room Type

**Deluxe Twin (with barrier-free designs and ostomate-friendly toilets)**

47.0㎡

Guest rooms with independent bathrooms (bathroom/ toilets/ wash basin). Toilets and washing spaces have sliding doors and have been equipped with ostomate-friendly toilets, which are also accessible to wheelchairs. Sofa beds have been set up in the living spaces.



Room Type

**Deluxe Twin (barrier-free type)**

47.0㎡

Guest rooms with independent bathrooms (bathroom/ toilets/ wash basin). Bathrooms and toilets have sliding doors, providing easy access for wheelchairs. Sofa beds have been set up in the living spaces.

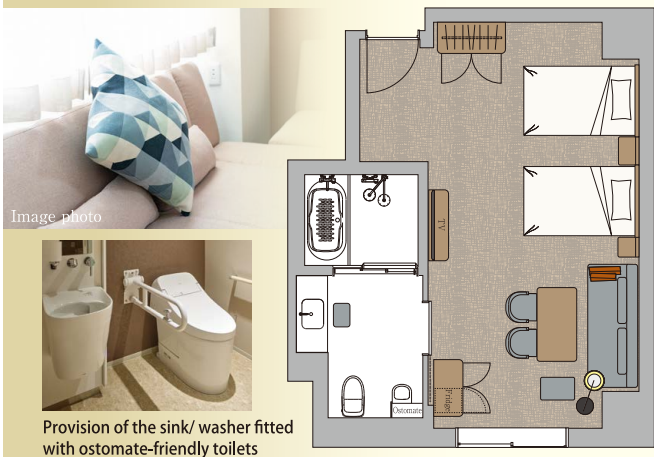


Image photo



Provision of the sink/ washer fitted with ostomate-friendly toilets

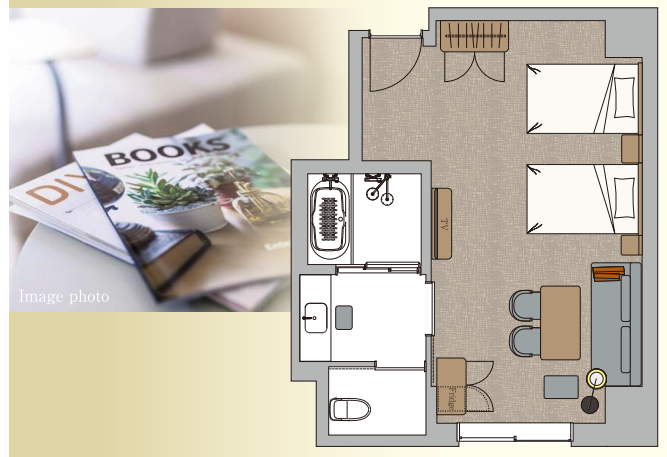


Image photo

GUEST ROOM

Room Type

**Executive Twin (with kitchen)**

45.7㎡

Guest rooms with a mini kitchen and independent bathroom (bathroom/ toilet/ wash basin)  
Sofa beds beside the 800x800mm tables have been provided in the lining spaces.

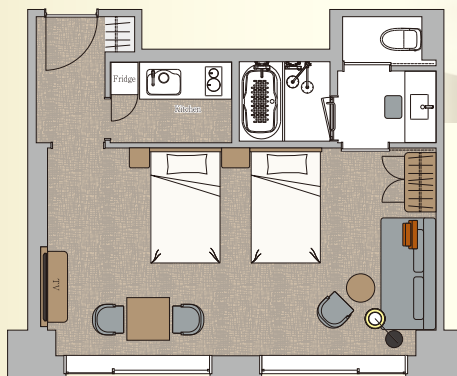


Image photo



Kitchen provided  
Microwave oven provided

Room Type

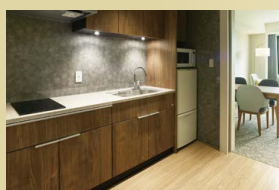
**Suites (with kitchen and washing machine)**

60.1㎡

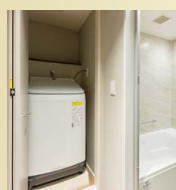
Guest rooms with separated mini kitchen, living rooms, and bed spaces.  
Comfortable rooms with independent bathrooms (bathroom/ toilet/ wash basin)  
including washing machines.  
Sofa beds in the living space and a dining table for three people are provided.



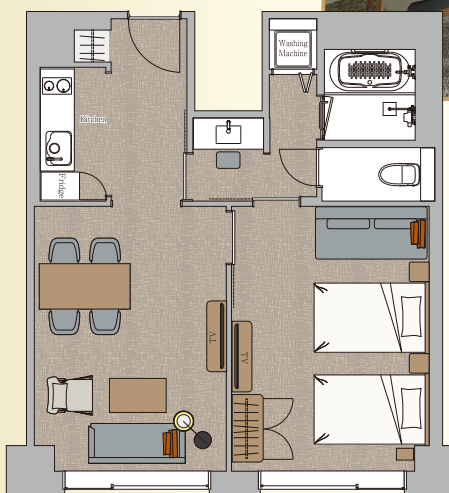
Image photo



Kitchen provided  
Microwave oven provided



Washing machines provided.



AMWNITY



Image photo

Microwave ovens are located on the 6th and the 7th floors. On other floors, they are available to rent.



Payable coin laundries are provided on the 3rd and 7th floors for guests.

〈 Common for all rooms 〉

- Provision of 24-hour bedside phones to call the care staff.
- Toilets have been set with emergency call buttons.
- Toilet and bathroom handrails, as well as medical device hooks have been installed.
- Toothbrushes/ Razor/ Hair Brush/ Shower Cap/ Cotton and Hairbands/ Cotton Swabs/ Body Soap/ Shampoo/ Conditioner/ Hand Soap/ Body Wash Towel/ Green Tea/ Mineral Water/ Nightwear/ Pull-Top Opener

Room Name	Guest Room Numbers	Width(㎡)	Capacity	Bed Size (mm) / No. of Beds
Moderate Double	60	22.8	2 people	1,400×1,960/1
Superior Twin	68	30.0	2 people	1,220×1,960/2
Superior Twin (with Ostomate-friendly toilet)	4	30.0	2 people	1,220×1,960/2
Deluxe Twin (barrier-free design )	5	47.0	3 people	1,220×1,960/2
Deluxe Twin (barrier-free design & Ostomate-friendly toilet)	1	47.0	3 people	1,220×1,960/2
Executive Twin (with kitchen)	3	45.7	3 people	1,220×1,960/2
Suit (with kitchen/ washing machines)	4	60.1	3 people	1,220×1,960/2

※Smoking is prohibited in all rooms (No smoking within the campus of Core Clinical Research Hospital)

Total No. of Guest Rooms ; 145 Maximum Capacity ; 303 people	Check-In 15:00 Check-Out 11:00
---	-----------------------------------