



Mitsui Garden Hotel

Fukuoka Gion

A luxurious hotel facility reminiscent of a culture of Hakata

That values honor and human kindness.
Discover Hakata once again along
with indoor and outdoor bath
located on the top floor of the hotel.



Mitsui Garden Hotel
Fukuoka Gion

Check In 15:00 / Check Out 11:00

2-8-15, Hakataekimae,
Hakata-ku, Fukuoka, 812-0011
TEL:+81-92-414-3131 FAX:+81-92-414-3101
[https://www.gardenhotels.co.jp/
fukuoka-gion/eng/](https://www.gardenhotels.co.jp/fukuoka-gion/eng/)



Lobby



Large Public Bath



Restaurant



Moderate Twin [23.9m²]

A luxuriously-sized guestroom featuring a sofa and a table. Enjoy your stay with a Hollywood Twin bed.



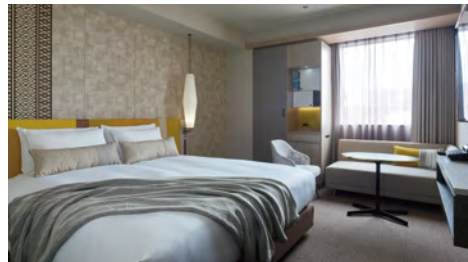
Junior Suite Twin [54.7m²]

Features guestroom with a Hollywood Twin bed and a living room with a sofa as well as a luxuriously-sized bathroom. Enjoy a refined moment as if you are in your own home.



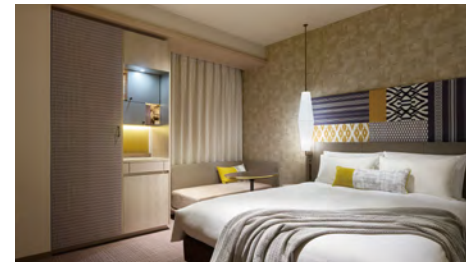
Triple [26.6m²]

A guestroom perfect for family and a group of women which can accommodate up to three guests. Relax in three single-seater chairs.



Superior King [25.3m²]

A luxuriously-sized guestroom featuring a sofa and a table. Relax by the window in a spacious room.



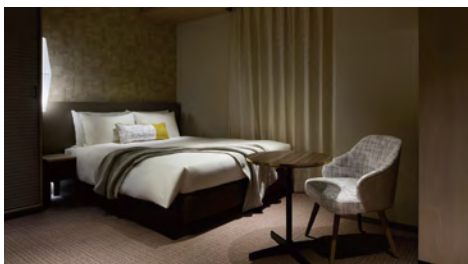
Comfort Double [20.7m²]

A comfortable sofa and a table accommodates guests on both business and leisure occasions. A spacious bed accommodates up to two guests.



Moderate Double [18.7m²]

A comfortable sofa and a table accommodates guests on both business and leisure occasions. A spacious bed accommodates up to two guests.



Accessible Double [25.1m²]

Features a spacious unit-bath which integrates bath/shower, toilet and vanity. Relax and enjoy your stay with a table and a single-seater chair.

Internet Connection

Free Wi-Fi access is available in all guest rooms, the hotel lobby and the restaurant. It is also available to use Wi-Fi on your smart phones and tablets.

Amenities

- Toothbrush set
- Cotton&hair tie
- Coffee
- Razor
- Shampoo
- Tea
- Hairbrush
- Conditioner
- Mineral water
- Shower cap
- Body soap
- Nightwear

*The area of this room is calculated using the center line of the wall, including the pipe shaft. The number is rounded off to one decimal place.

*We ask all guests to pay in advance upon check in.



Large Public Bath for ladies

Restaurant Uoden 【1F】

Information

Breakfast	Japanese/Western-style buffet, Adults 1,890 yen (tax included) Elementary school students 950 yen (tax included)
Tel	050-3184-0920
Floor	1F
Opening Hours	Breakfast 6:30a.m.~10:00a.m. (Last Entry 9:30a.m.)
	Lunch 11:30a.m.~3:00p.m. (Last Entry 2:30p.m.)
	Dinner 5:30p.m.~11:00p.m. (Last Entry 10:00p.m.)
Seats	Non-smoking 80 seats

*Please note the menu and the service time may change without notice.



Standing Bar Hakata #092 【1F】

Information

Tel	050-3184-0920
Floor	1F
Opening Hours	4:00p.m.~12:00p.m. (Last Entry 11:30p.m.)
Seats	Non-smoking 50 persons

*Please note the menu and the service time may change without notice.

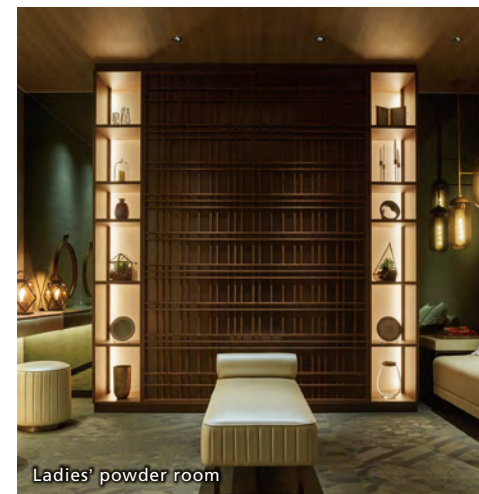


Large Public Bath 【13F】

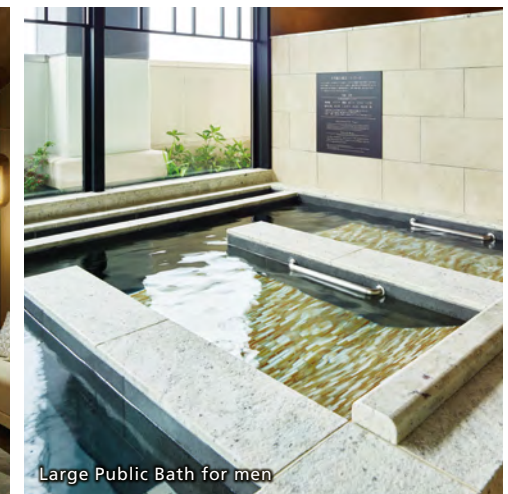
Our hotel offers a relaxing Large Public Bath on the top of the hotel. Features a steaming sauna, "bed-bath" and outdoor bath for our guests to enjoy a variety of baths in Hakata, a city of hot springs.

- For exclusive use of hotel guests: free of charge.
- Opening Hours 6:00a.m.~9:00a.m./ 3:00p.m.~1:00a.m.

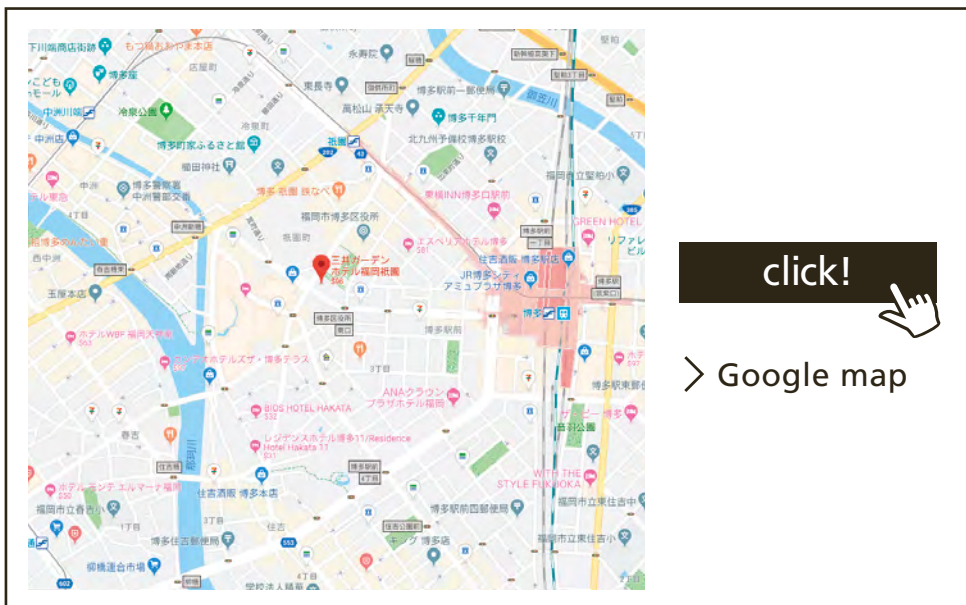
*Guests may wear dressing gowns and slippers to the public bath, however please refrain from wearing them in the lobby or restaurant areas.
*Intoxicated guests and guests with tattoos are prohibited from entering the Large Public Bath area.



Ladies' powder room



Large Public Bath for men



Local sightseeing spots

- CANAL CITY HAKATA
Approximately 1 minute by walking from the hotel.
- JR Hakata City
Approximately 8 minutes by walking from the hotel.
- Kushida Shrine
Approximately 8 minutes by walking from the hotel.
- Marine Messe Fukuoka
Approximately 25 minutes by bus
- FUKUOKA PayPay Dome
Approximately 35 minutes by bus

By train

- Approximately 7 minutes by walking from JR Hakata Station, Hakataguchi
- Approximately 5 minutes by walking from Subway Kuko Line "Gion" station Exit 5.

By Shinkansen (bullet train)

- From Osaka…………… Approximately 2 hours 40 minutes on Tokaido / Sanyo Shinkansen (get off at Hakata Station)
- From Hiroshima…………… Approximately 1 hour 6 minutes on Tokaido / Sanyo Shinkansen (get off at Hakata Station)
- From Kagoshima…………… Approximately 1 hour 53 minutes on Kyushu Shinkansen (get off at Hakata Station)

By car

- From Gofukumachi Ramp…………… Exit on Fukuoka Expressway Route 2, take Taihaku-dori to Gion-dori / Approximately 5-10 minutes
- From Fukuoka Airport…………… Take Prefectural Road 45 via National Highway 385 Approximately 10-15 minutes

Car Parking	● Fees	1,600 yen (per night / including tax)
	● Number of parking spaces available	28 passenger cars
	● Hours	14:00-12:00 next day (excluding guests staying consecutive nights)

Access from airport

From Fukuoka Airport

- Take Subway Kuko Line and get off at "Hakata" Station.
- Approximately 7 minutes by walking from Hakataguchi.

From Fukuoka Airport

- Take Subway Kuko Line and get off at "Gion" Station.
- Approximately 5 minutes by walking from Exit 5.

Hotel Information

Large Public Bath [13F]

For exclusive use of hotel guests…………… free of charge
 Opening hours…………… 6:00a.m.~9:00a.m.
 3:00p.m.~1:00a.m.

Restaurant Uoden [1F]

Breakfast…………… 6:30a.m.~10:00a.m.(Last Entry 9:30a.m.)
 Lunch…………… 11:30a.m.~3:00p.m.(Last Entry 2:30p.m.)
 Dinner…………… 5:30p.m.~11:00p.m.(Last Entry 10:00p.m.)
 TEL…………… 050-3184-0920

Standing Bar Hakata #092 [1F]

Opening hours…………… 4:00p.m.~12:00p.m.(Last Entry 11:30p.m.)
 TEL…………… 050-3184-0920

Mitsui Garden Hotel Fukuoka Gion

Check In 15:00 / Check Out 11:00

2-8-15, Hakataekimae, Hakata-ku, Fukuoka, 812-0011 TEL:+81-92-414-3131 FAX:+81-92-414-3101
<https://www.gardenhotels.co.jp/fukuoka-gion/eng/>