



Mitsui Garden Hotel

Chiba

A stage of kindness and comfort, Mitsui Garden Hotel Chiba

Providing a calm and relaxing atmosphere with a full security system for all guest rooms.

Our 208 guest rooms range from single rooms to family-type rooms.



Mitsui Garden Hotel
Chiba

Check In 15:00 / Check Out 11:00

1-11-1 Chuo, Chuo-ku, Chiba, 260-8626
TEL:+81-43-224-1131 FAX:+81-43-224-1156
<https://www.gardenhotels.co.jp/chiba/eng/>



Room image



Lobby



Restaurant



Standard Double [16m²]

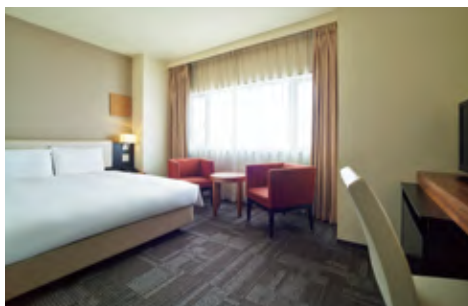
This spacious single room offers the ideal space for you to wind down after a long day and enjoy a peaceful night's sleep.

Standard Twin [16m²]

Standard-typed Twin Room, A cozy room for couples or friends to spend their relaxing time.

Moderate Twin [23m²]

This spacious room that accommodates up to three guests is ideal for trips with family or friends.



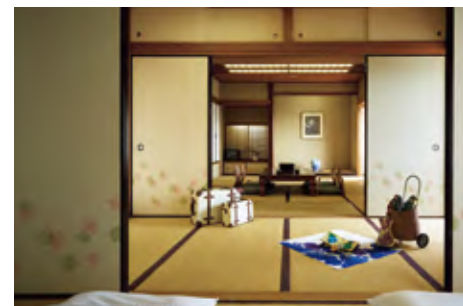
Moderate Queen [18m²]

Upper floors rooms overlook the views of Chiba-city. Please spend a nice time at night while watching the couple and friends spread out below.



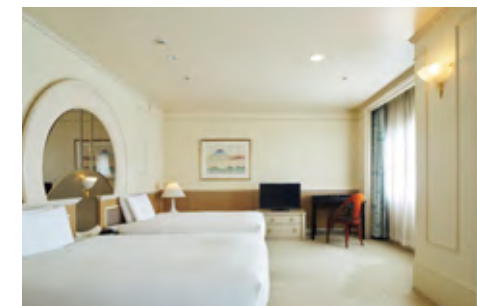
Fourth [49m²]

Can stay up to four people family and friends. Please have fun and socialize while it has a table and sofa set.



Japanese [79m²]

The main room is a "Japanese Tea Room" offers relaxation, as well as available.



Suite [105m²]

We offer spacious living space. Please spend the time slowly as your home comfort. Some rooms can be like five or six meetings.

Internet service

Wireless LAN internet service is available in all guest-rooms, while guests may also set up a wired network connection using the provided LAN cable. This service is complimentary and available 24 hours a day.

Amenities

- | | | | |
|------------|--------------------|--------------------|---------------------|
| [In room] | ● Shampoo | ● Body soap | ● Tea |
| | ● Hair conditioner | ● Face & hand soap | ● Nightwear |
| [At lobby] | ● Toothbrush kit | ● Hairbrush | ● Cotton swabs |
| | ● Razor | ● Shower cap | ● Cotton & Hair tie |

*The area of this room is calculated using the center line of the wall, including the pipe shaft.
 *The number of baby beds is limited. Please inquire in advance for availability.
 *We ask all guests to pay in advance. *There are no service charges.



Pasciona 【2F】

The tasty dishes prepared with locally sourced ingredients bring many customers back to this restaurant regularly, where they enjoy our proudly offered “Chiba grown and served” breakfast. Our chef is always creating new menu dishes from the bounty of Chiba Prefecture. Enjoy breakfast overlooking trees in the park brightened by morning sunshine.

Information

Breakfast	Buffet style
Floor	2F
TEL	043-224-0689
Opening Hours	Breakfast 7:00a.m.~9:30a.m.(Last Entry 9:00a.m.)
	Lunch 11:30a.m.~2:30p.m.(Last Entry 2:00p.m.)
	Dinner Between 16:00-21:00, the restaurant caters exclusively for large groups (25 or more) for up to 2 hours.
Seats	92 seats
Smoking / Nonsmoking	All non-smoking



Lounge 【2F】

Conveniently located near the reception and lobby areas, the lounge is a great place to meet up. The high ceilings create an airy space, and you are invited to sit back and relax in our comfortable sofas. We serve light snacks for lunch. You are also welcome to use the lounge for meetings and gatherings. We also recommend the prettily decorated pastries from the hand of our in-house female patissier.

Information

Floor	2F
TEL	043-224-1131
Opening Hours	11:00a.m.~5:00p.m.(Last Entry 4:30p.m.)
Seats	64 seats
Smoking / Nonsmoking	All non-smoking

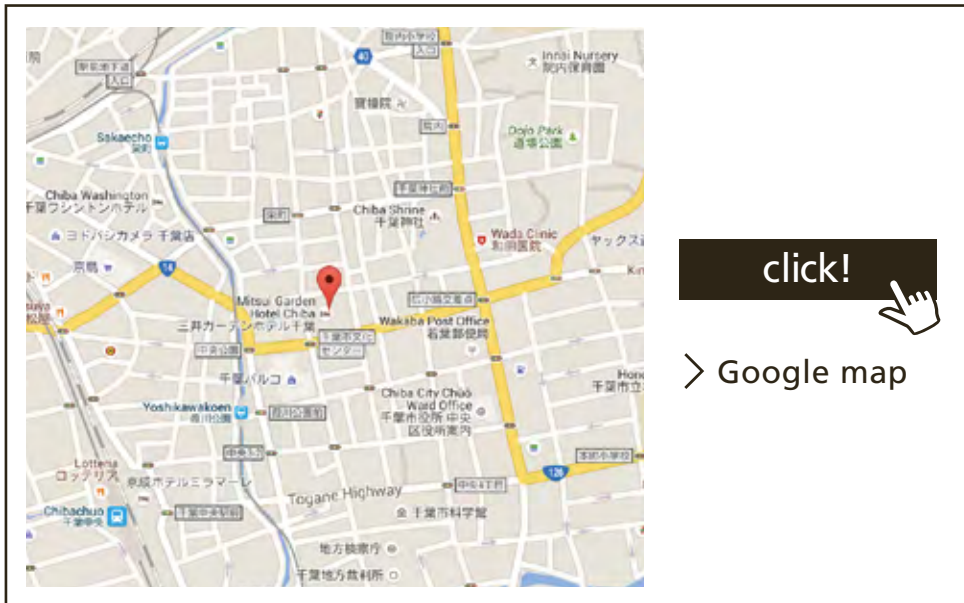


Japanese Restaurant Shiosai 【2F】

We Offer traditional Japanese-Style dishes that change with the seasons specially. Please enjoy the Soup stock with Fishes and Vegetables.

Information

Floor	2F
TEL	043-306-1131
Opening Hours	Lunch 11:30a.m.~3:30p.m.(Last Entry 2:30p.m.)
	Dinner 5:00p.m.~9:00p.m.(Last Entry 8:00p.m.)
Seats	100 seats
Smoking / Nonsmoking	All non-smoking



Sightseeing near the Hotel

- Chiba City Art Museum
About a 5-minute walk from the hotel
An art museum renowned for its variety of unique exhibitions.
- Chiba Port Tower
About 10 minutes by car from the hotel
The observation deck provides a spectacular view of Tokyo Tower and other tall buildings.
- Chiba Zoological Park
About 20 minutes by car from the hotel
Many animals including lesser pandas are on display.
- Naritasan Shinshoji Temple
About 40 minutes by car from the hotel
The main temple of a Shingon-shu Chizan-ha Buddhist sect.
- Narita International Airport
About 40 minutes by car from the hotel
One of the main ports of entry for travellers to Japan.
- Zozo Marine Stadium
About 40 minutes by car from the hotel
The home grounds of the Chiba Lotte Marines baseball team

By Train

- 7 minutes on foot from East Exit of JR Chiba Station
- 7 minutes on foot from Chiba Chuo Station of Keisei Chiba Line
- 2 minutes on foot from Yoshikawa Koen Station of Chiba Urban Monorail Line 1

By Car

- 15 minutes from Anagawa Interchange of Keiyo Road

Hotel Information

Restaurant Paciona [2F]

- Breakfast 7:00a.m.~9:30a.m.(Last Entry 9:00a.m.)
- Lunch 11:30a.m.~2:30p.m.(Last Entry 2:00p.m.)
- Dinner Between 16:00-21:00, the restaurant caters exclusively for large groups (25 or more) for up to 2 hours.
- TEL 043-224-0689

Japanese Restaurant Shiosai [2F]

- Lunch 11:30a.m.~3:30p.m.(Last Entry 2:30p.m.)
- Dinner 5:00p.m.~9:00p.m.(Last Entry 8:00p.m.)
- TEL 043-306-1131

Lounge Lounge [2F]

- Opening Hours 11:00a.m.~5:00p.m.(Last Entry 4:30p.m.)
- TEL 043-224-1131

Mitsui Garden Hotel Chiba

Check In 15:00 / Check Out 11:00

1-11-1 Chuo, Chuo-ku, Chiba, 260-8626 TEL:+81-43-224-1131 FAX:+81-43-224-1156
<https://www.gardenhotels.co.jp/chiba/eng/>